

# Weekly Alaska Salmon Harvest Update #8

Harvest Through Statistical Week 30

(Figures Shown in Thousands of Fish)

	Sockeye			Pink			Keta			Coho			Chinook		
	YTD 2018	YTD 2019	YoY	YTD 2017	YTD 2019	YoY	YTD 2018	YTD 2019	YoY	YTD 2018	YTD 2019	YoY	YTD 2018	YTD 2019	YoY
AYK	3	4	33%	20	86	330%	1,120	472	-58%	27	4	-85%	16	4	-75%
Kodiak	476	1,249	162%	4,471	7,120	59%	413	266	-36%	55	33	-40%	2	6	200%
Chignik*	0	0	-	855	0	-	1	0	-	0	0	-	0	0	-
AK Pen. & Aleutian Is.	3,022	3,247	7%	4,310	11,176	159%	984	881	-10%	215	186	-13%	18	25	39%
Bristol Bay	41,116	42,602	4%	30	4	-87%	1,571	992	-37%	27	15	-44%	46	29	-37%
Cook Inlet	1,114	1,225	10%	346	218	-37%	144	89	-38%	154	84	-45%	3	2	-33%
Prince William Sound	1,256	2,433	94%	19,200	10,884	-43%	2,621	4,867	86%	8	2	-75%	7	17	143%
Southeast	203	174	-14%	10,813	2,170	-80%	4,965	1,473	-70%	378	217	-43%	114	98	-14%
<b>Statewide</b>	<b>47,190</b>	<b>50,934</b>	<b>8%</b>	<b>40,045</b>	<b>31,658</b>	<b>-21%</b>	<b>11,819</b>	<b>9,040</b>	<b>-24%</b>	<b>864</b>	<b>541</b>	<b>-37%</b>	<b>206</b>	<b>181</b>	<b>-12%</b>

2019 YTD through 7/27/19; 2018 YTD through 7/28/18. Data is subject to revision. \*While landings are occurring in Chignik, a small number of buyers mean data is confidential.

Source: Alaska Department of Fish & Game.

## Summary

Through July 27<sup>th</sup>, about 92 million salmon have been commercially harvested in Alaska. Between 50 and 60 percent of the annual harvest occurs after this point in the season in an odd-numbered year. Most of this volume will come from pink salmon harvests which have slowed in the last two weeks. Keta, coho, and Chinook harvest are also slow, a contrast to strong sockeye landings.

Cumulative sockeye landings exceeded 50 million fish last week, supported by strong landings in Bristol Bay and most other Alaska regions. Southeast is about 14 percent behind 2018 and less than half the long-term average. Sockeye harvest for Southeast typically peaks the second week of August.

The next three weeks (including the current one) are usually the peak of the pink salmon harvest. Landings over this period can exceed 20 million fish per week. Harvest of 32 million fish YTD is roughly 20 percent behind the recent odd-number year average. Kodiak and Alaska Peninsula & Aleutian Islands are having strong seasons, while Southeast and PWS are lagging.

Keta harvest YTD is about a quarter lower than 2018 and the long-term average. Fishing has been particularly challenging in AYK and Southeast which are 58 and 70 percent behind the 2018 pace, respectively. Weekly statewide production in a typical year averages about a million fish over the next four weeks.

YTD coho landings are 37 percent behind 2018 and half the five-year average. Weekly coho landings typically trend higher over the next four weeks with a peak in late August. Chinook harvest of about 180,000 fish is 12 percent lower YTD.

Where to buy Alaska seafood (click for link): [ASMI Suppliers Directory](#)

## 2019 Harvest v. Forecast

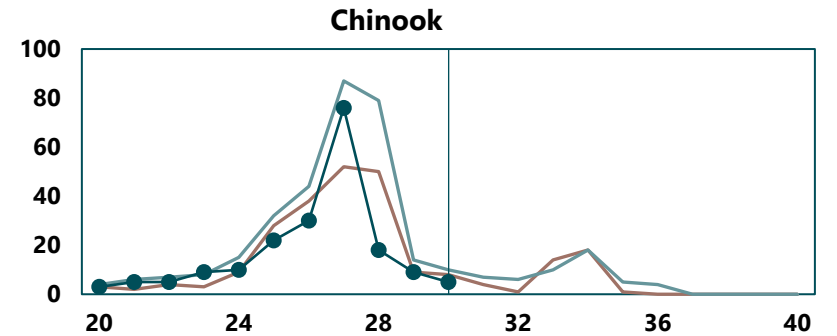
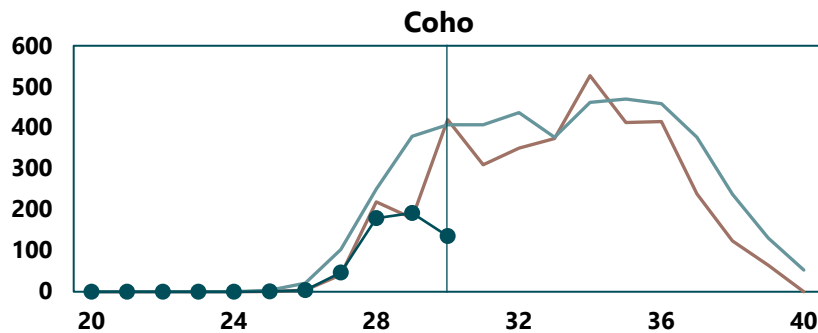
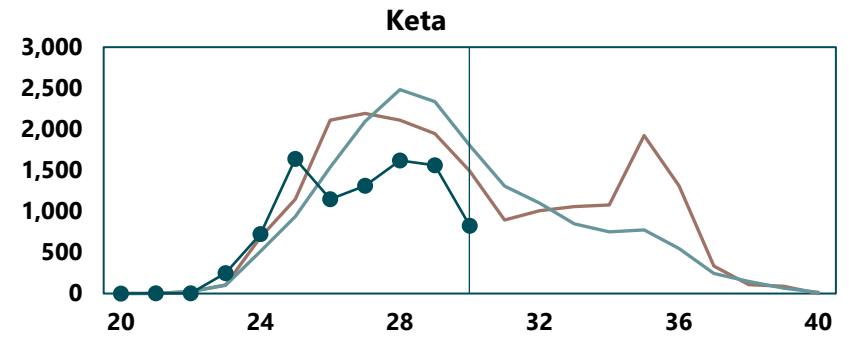
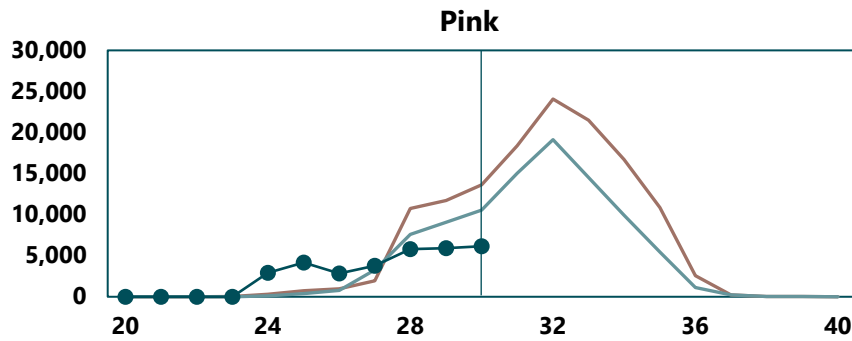
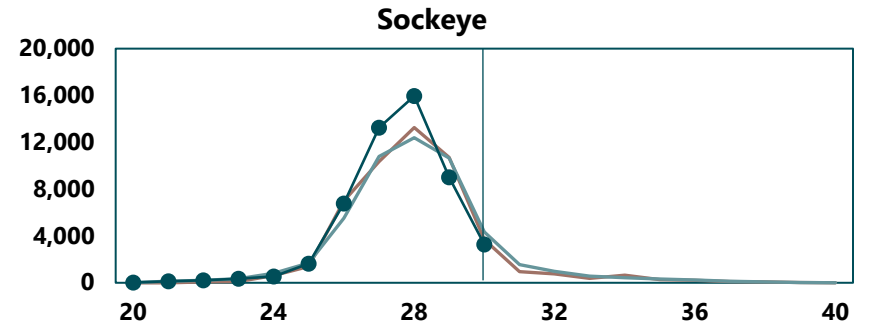
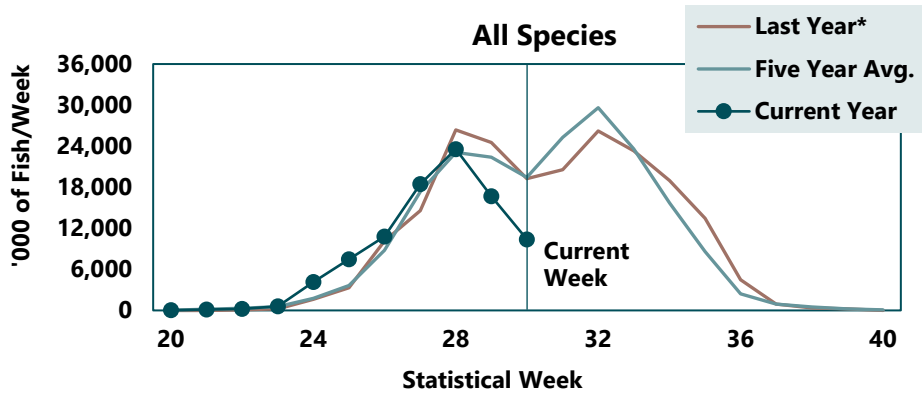
('000 fish)

	Harvest	Forecast	% Realized
Sockeye	50,934	41,686	122%
Pink	31,658	137,830	23%
Keta	9,040	28,962	31%
Coho	541	4,628	12%
Chinook	181	250	72%
<b>Total</b>	<b>92,354</b>	<b>213,356</b>	<b>43%</b>



# Salmon Harvest by Statistical Week, 2019

(Thousands of Fish per Week)



\*Last year uses 2017 pink salmon instead of 2018 (most recent odd-year).

Source: Alaska Department of Fish & Game.

Statistical Week	18-22	23-26	27-31	32-35	36-40
Approximate Mth.	May	June	July	August	September